



Manufacturer of glass reinforced concrete products





Skonto Group

- Skonto Concrete Cladding is part of the Skonto Group – a group of Latvia based export oriented construction companies with a global turnover of 300M EUR of which the UK market represents 50M EUR





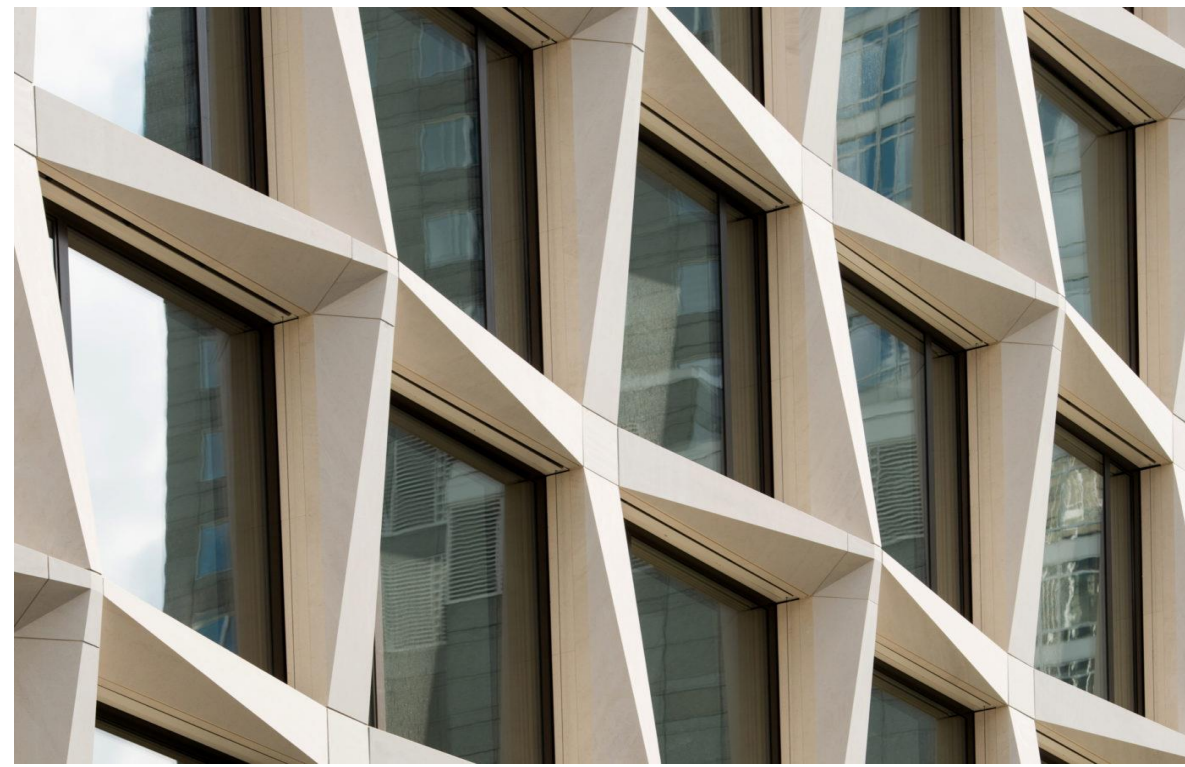
Glass Reinforced Concrete

- First buildings in 70s
- Wide choice in form and texture
- Lightweight, durable & customizable
- Non-combustable
- Long service life
- Easy on-site handling



Value engineering

- Efficient alternative for precast concrete
- Economic option for natural and cast stone
- Cost effective substitute for terracotta tiles



Natural stone



Precast concrete



Terracotta tiles





Design & production of GRC panels and backing systems



Key Features:

- ▶ GRCA Grade 18 direct spray
- ▶ 12mm thickness (27kg/m²)
- ▶ BIM ready 3D in house design
- ▶ Single mould size up to 2x4m
- ▶ 5-sided panels
- ▶ Custom backing systems in stainless steel/
aluminium/galvanized steel, adjustable in all axes
- ▶ Non-combustible EN 13501 A.1

Lightweight, durable & customisable = architectural freedom



Factory at a glance

- 3700 m² production space
- 300 m² office space
- In-house laboratory
- 25-50 production staff





SKONTO
CONCRETE CLADDING

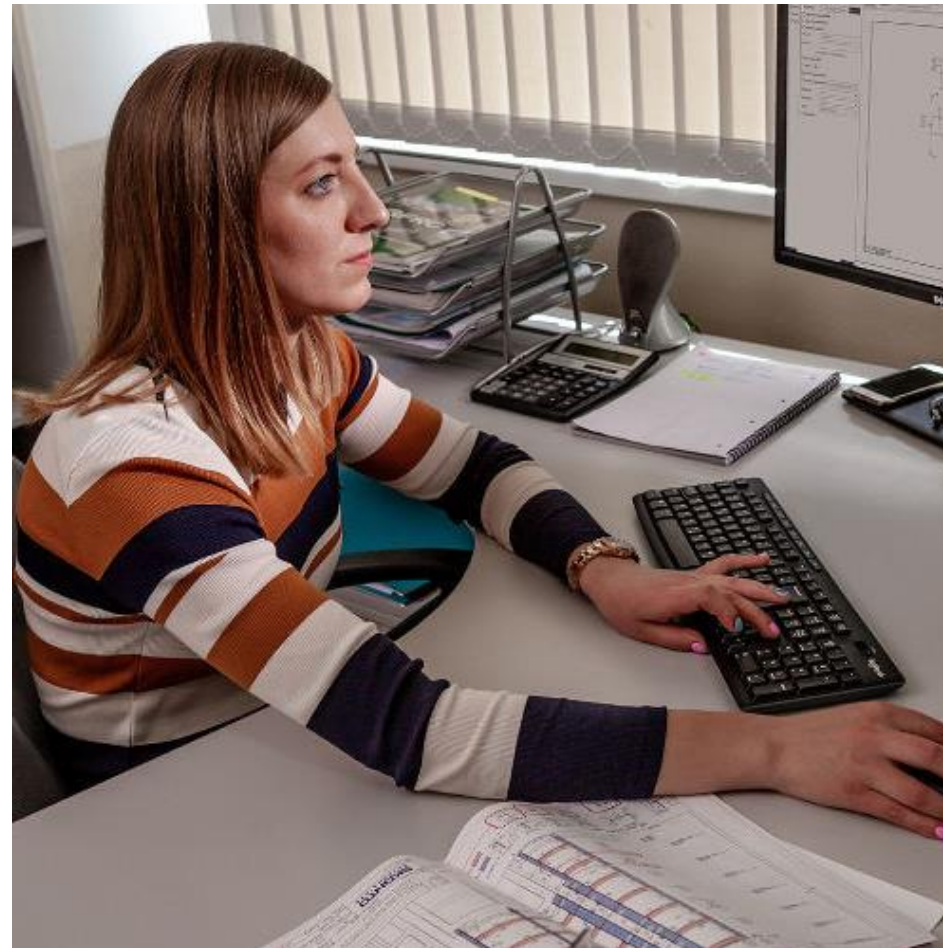
Manufacturing capacity

◀ 25,000 m² annual production capacity





GRC Production process



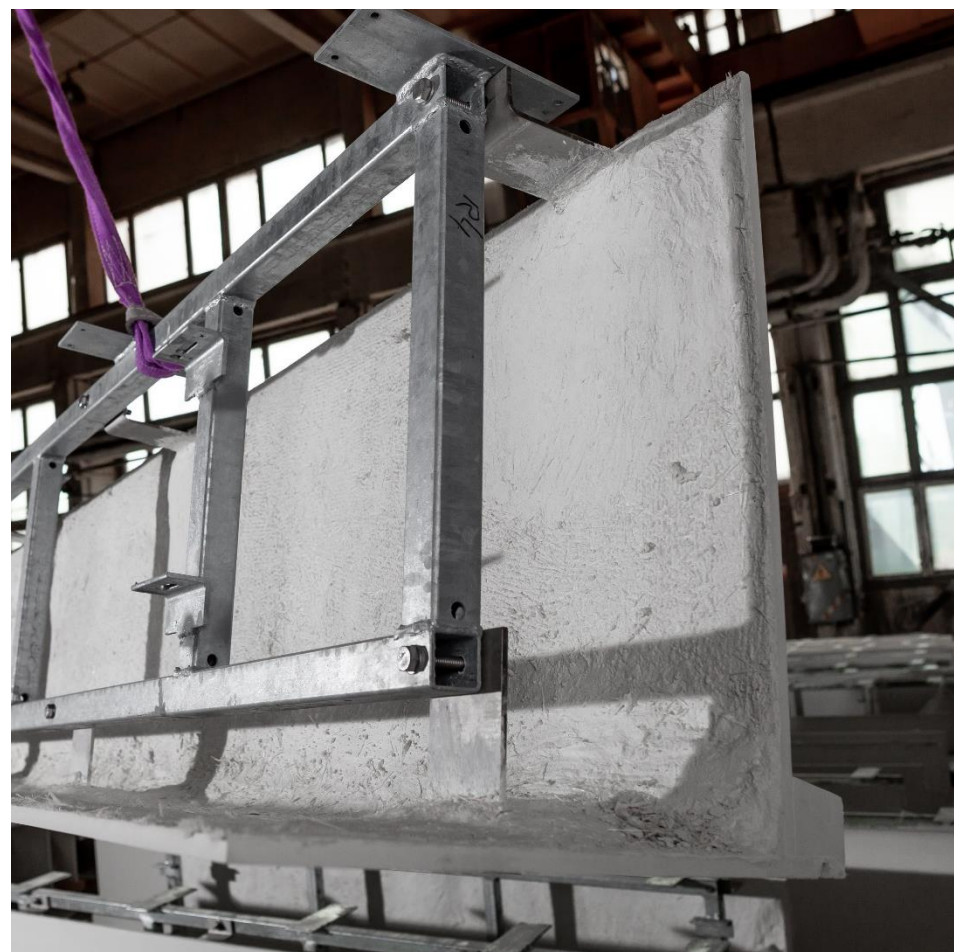
engineering



pre-mix preparation



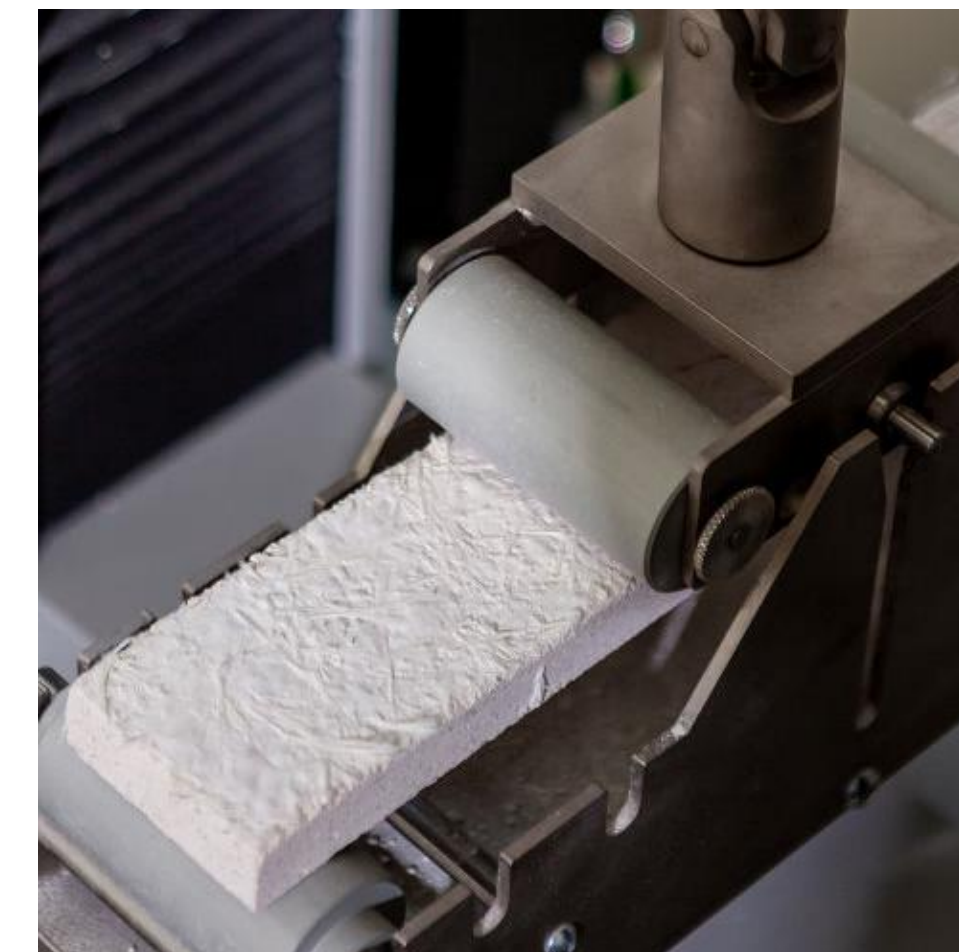
spraying



installing fixing system



finishing



testing



packaging

All the way through - From CAD to Site

Technical Specification

Spray-up glass fibre reinforced concrete, manufactured to GRCA Grade 18P. Formed from a Portland cement (EN 197-1), silica sand (maximum grain size 1,2 mm) mix with acrylic polymers, superplasticizers, alkali resistant glass fibre and inorganic colouring pigments

Limit of Proportionality (LOP) N/mm ²	8
Modulus of Rupture (MOR) N/mm ²	21
Shear strengths; In Plane Shear (N/mm ²)	10
Total ultimate shrinkage	<0.2%
Impact test (CWCT note 75)	Class 1
Surface water absorption at wet weather conditions (%)	8

Full Specification available as separate PDF



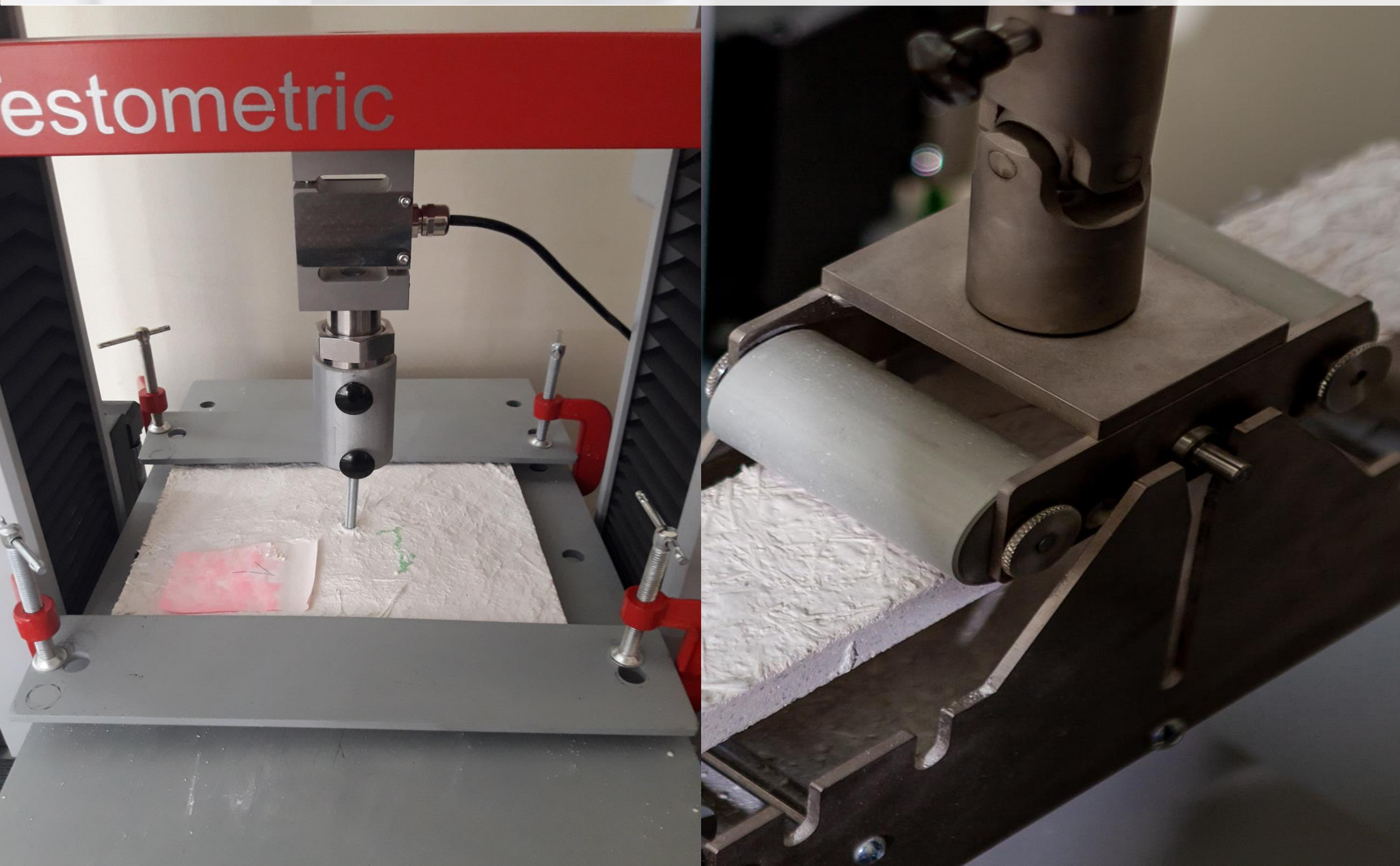
ISO Certified production



Non-combustible class A1 to EN 13501

Committed & certified to delivering the best

Internal testing



- ▶ Bending test BS EN1170-5:1998
Fixing pull out and shear tests
- ▶ Plasticity of the mortar.
"Slump test" method BS EN1170-1:1998
- ▶ Fiber content in fresh GRC.
"Wash-out test" BS EN1170-2:1998
- ▶ Fiber content of sprayed GRC.
"Bag and bucket test" BS EN1170-3:1998
- ▶ Absorption of water by immersion
and dry density. BS EN1170-6:1998



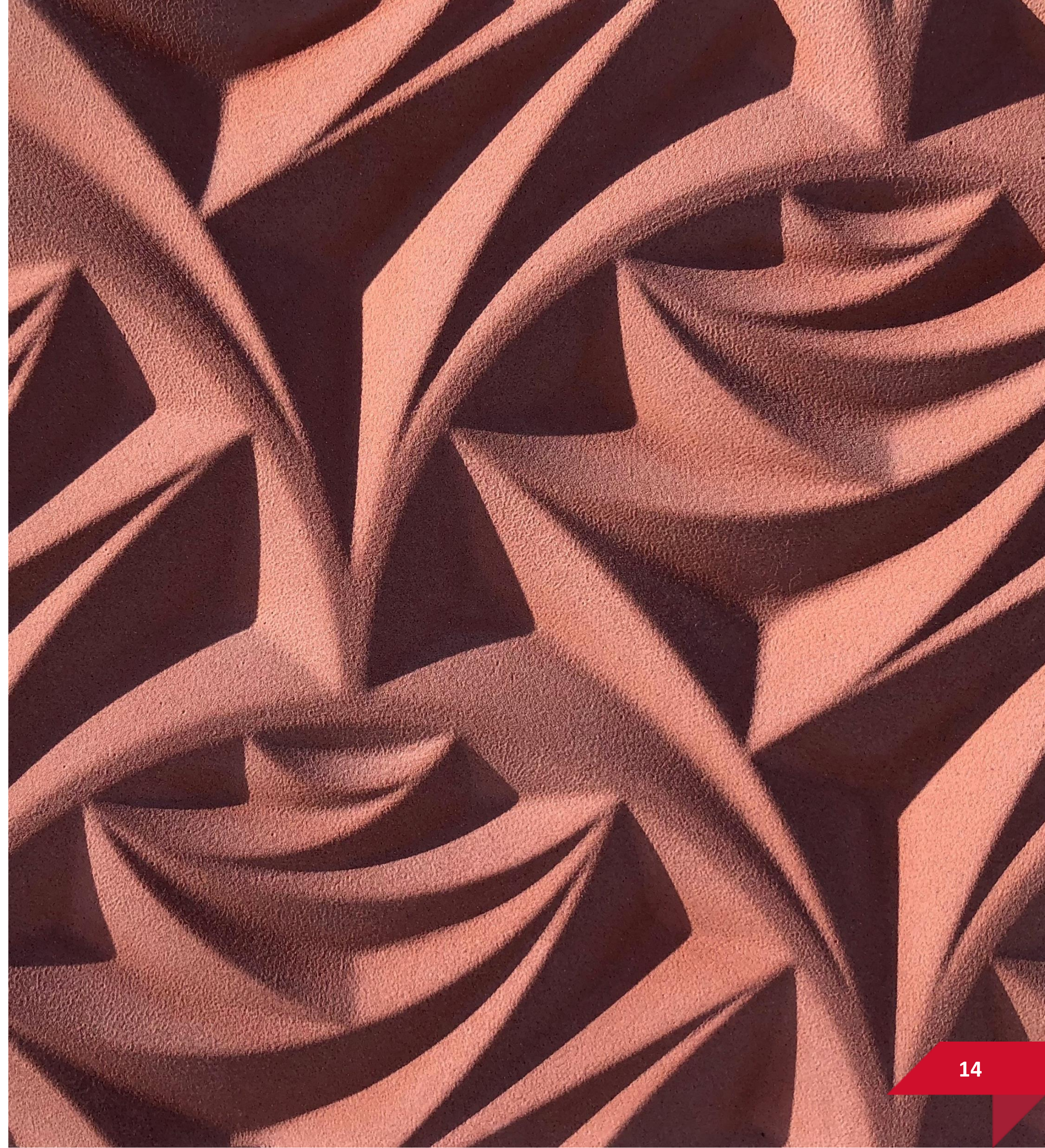
External testing



- ▶ Non-combustible class A1 to EN 13501. Testing performed in Fire Research Centre of Fire and Rescue Department under the Ministry of the Interior of Lithuania
- ▶ Impact test in accordance with CWCT N76. Performed in VINCI Technology Centre UK
- ▶ Weathering test according to EN ISO 4892-3 for 1 year and 5 years. Performed in Polymer Material Institute of Riga Technical University in Latvia

Finishes

- ▶ Smooth or textured surface
- ▶ Wide choice of colours
 - Through coloured
 - Inorganic pigments
- ▶ Products are weatherproof and lightfast
- ▶ Decorative aggregates
 - Visible stones
 - Enhanced colors



Rough surface

- ❑ Wide choice of colours
- ❑ Through coloured
- ❑ Decorative aggregate options
- ❑ Panel thickness 12mm + texture



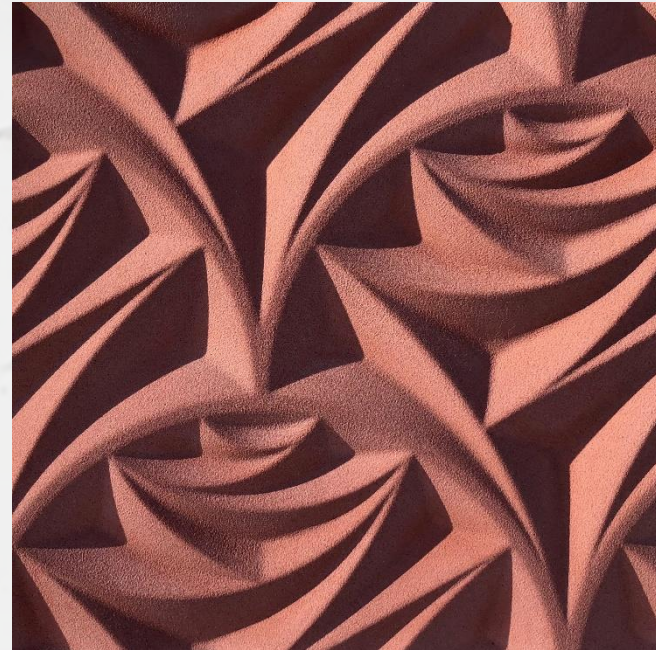
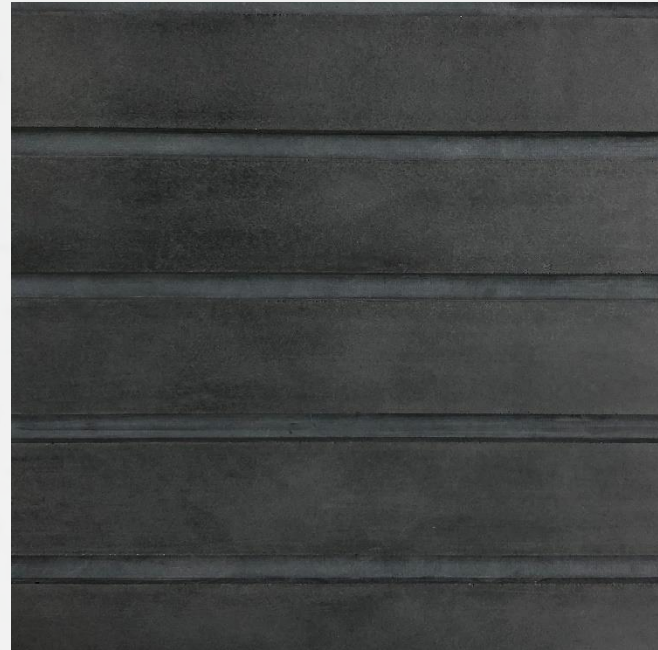
Smooth surface

- ◀ Wide choice of colours
- ◀ Through coloured
- ◀ Weatherproof



Patterns

- ◀ High quality and precision in house mould production
- ◀ Experience with RECKLI formliners
- ◀ Graphic concrete





Complex shapes

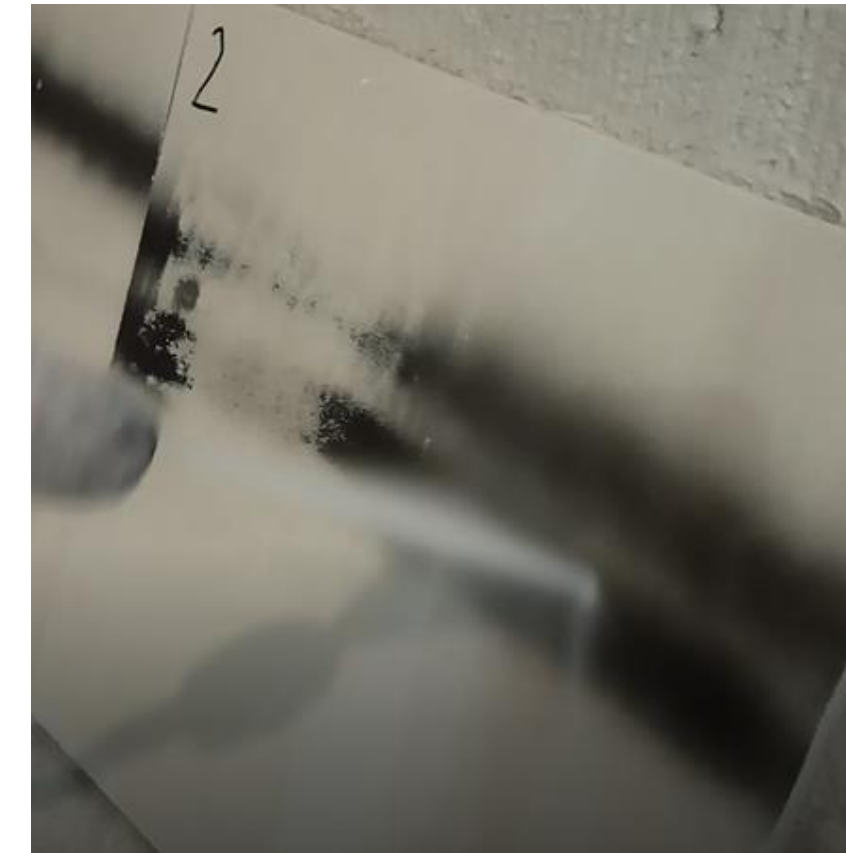


Built-in support frame for mounting & superior durability

Additives

- ❑ Can slightly affect panel colour – can be avoided by adjusting necessary surface colour in advance
- ❑ **Hydrophobic**
 - embedded or surface applied
 - re-applied every 10 years
- ❑ **Anti Graffiti**
 - water repellent
 - re-applied every 7 years

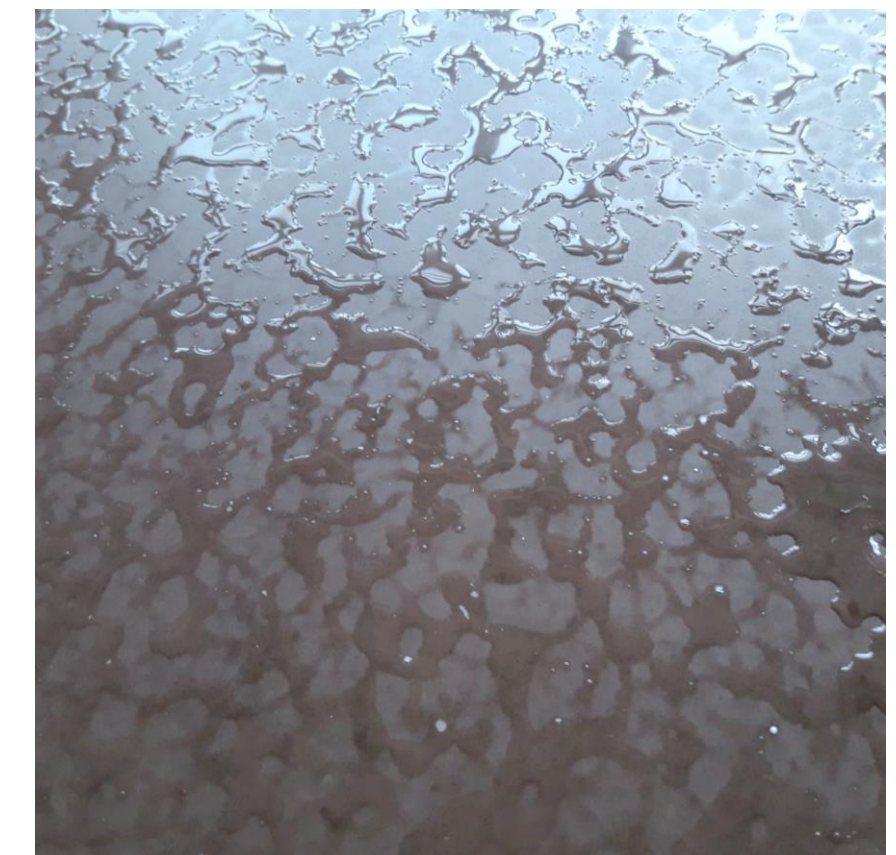
Panel without anti graffiti coating



Panel with anti graffiti coating



Hydrophobic coating



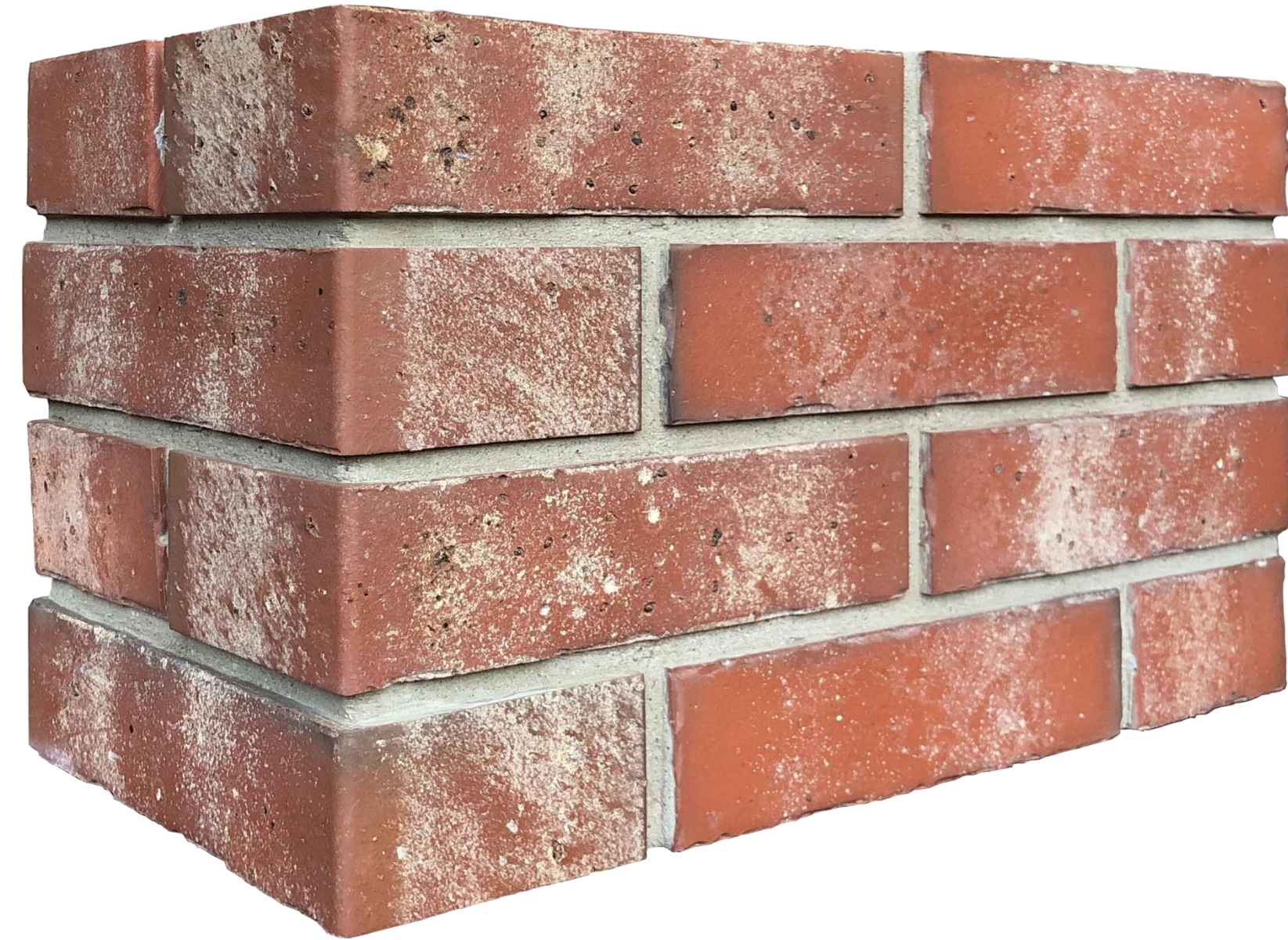


Brick faced GRC

- ◀ Lightweight solution to achieve brick faced finish 50-120kg/m²
- ◀ Thin brick faced wall cladding 40-60mm
- ◀ Fast installation with panel sizes limited only by transportation
- ◀ Mechanically fixed brick-slips – durable, safe and non-combustible

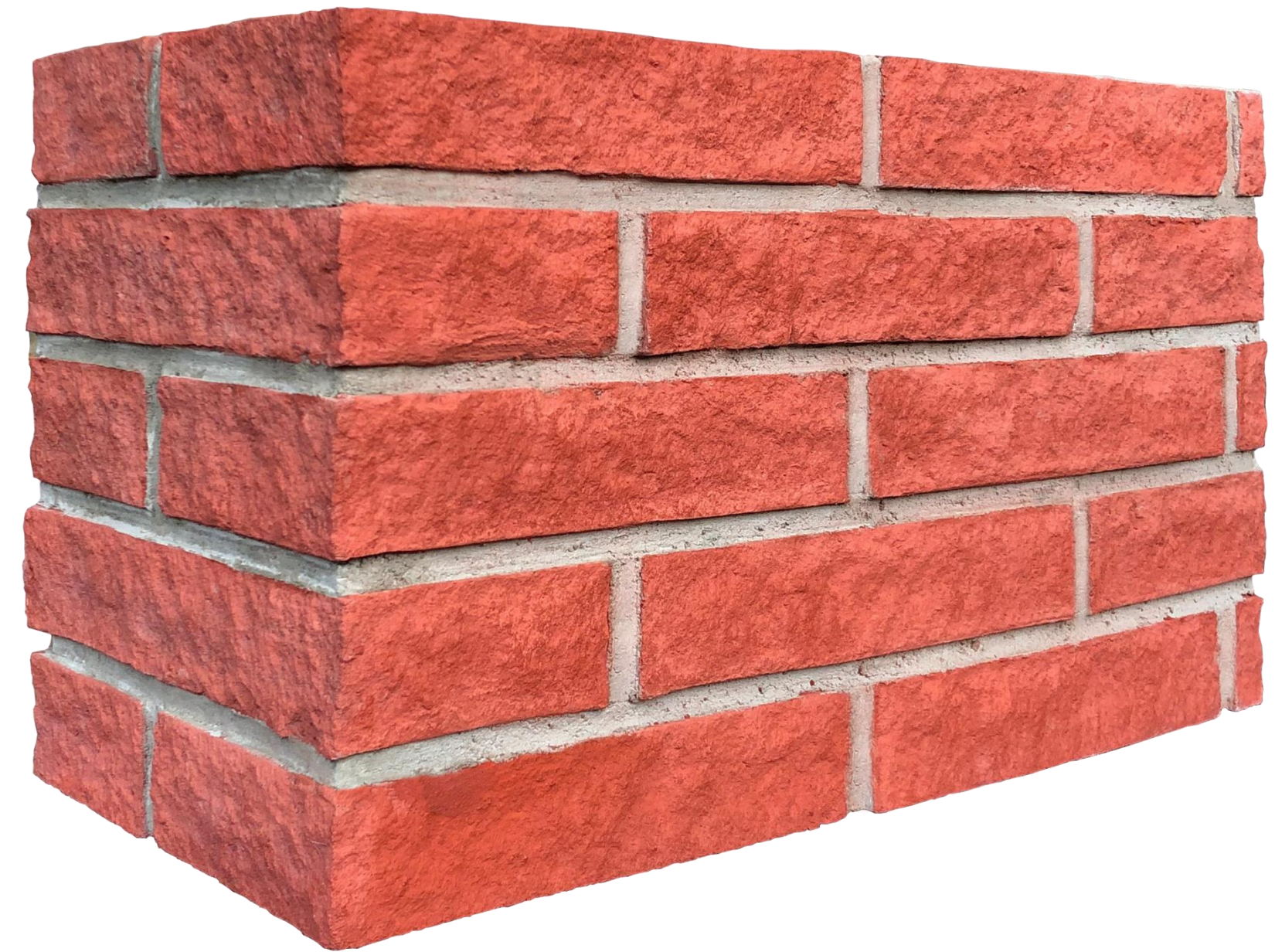
Brick-slip faced GRC

- Non-combustible to EN 13501 A.1
- Any brick slips from any manufacturer can be used
- Each brick slip is mechanically bonded with GRC backing using multiple stainless steel anchors
- Manually pointed mortar joints in any colour and texture
- Panel dimensions limited only by transportation



Brick textured GRC

- Grade 18P direct sprayed GRC with brick texture and manually pointed dummy joints
- Panels are through coloured to ensure consistency of colour even if chipped
- Panel dimensions limited only by transportation
- Non-combustible EN 13501 A.1



Perfect for unitized facade systems

- ◀ Light weight solution that permits unitization of precast and brick faced facades
- ◀ Non-combustible EN13501 A.1
- ◀ Can be integrated with unitized facade system frame
- ◀ Large panel sizes minimise work on site and in facade contractors factory
- ◀ Any bricks can be used and any pointing style can be matched

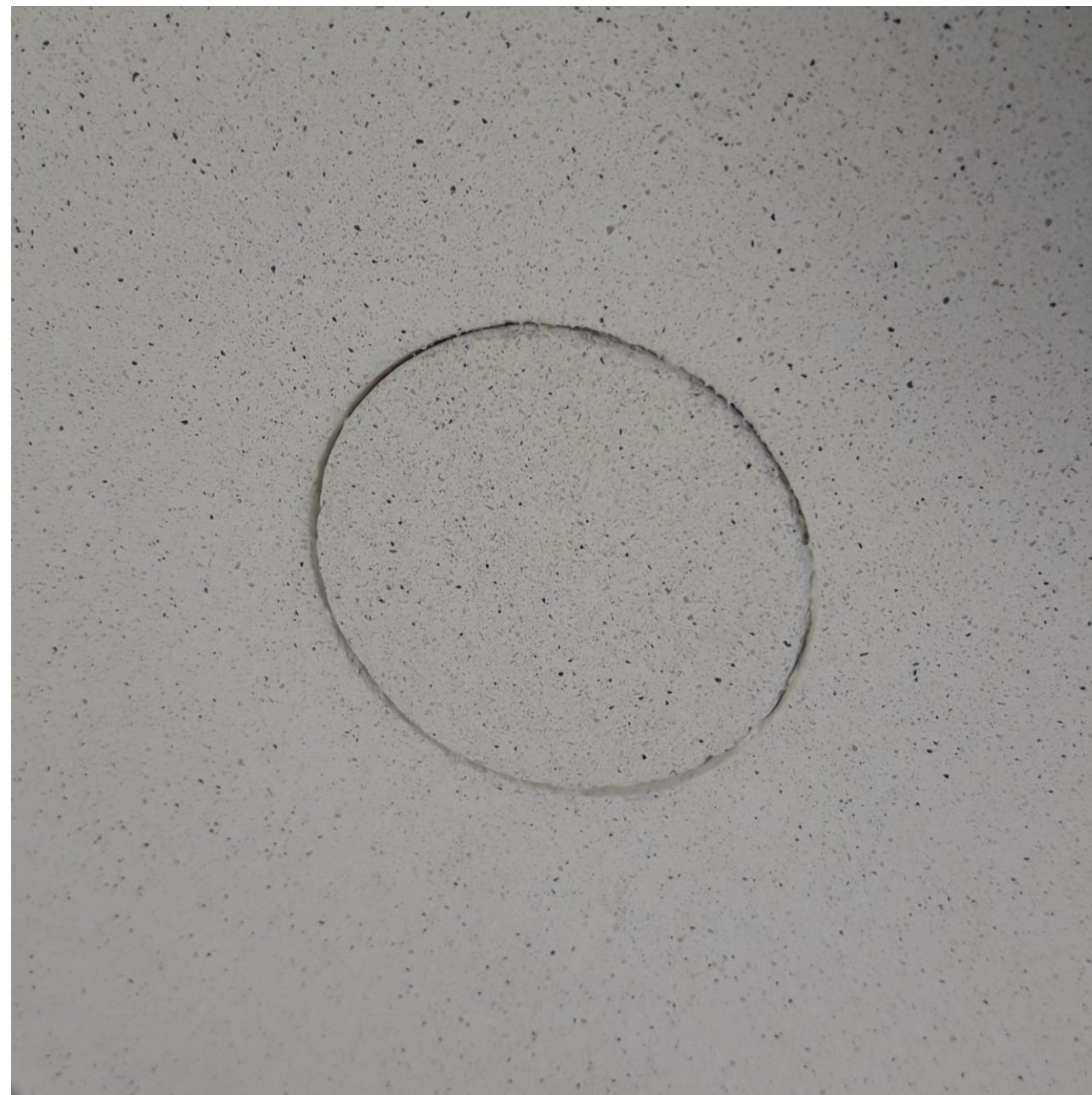


Packaging

- ❑ Packaging is constructed exclusively from FSC timber
- ❑ Strict packaging design safety guidelines
- ❑ Efficient use of materials leads to reduced waste
- ❑ Efficient use of space leads to lower pollution and costs

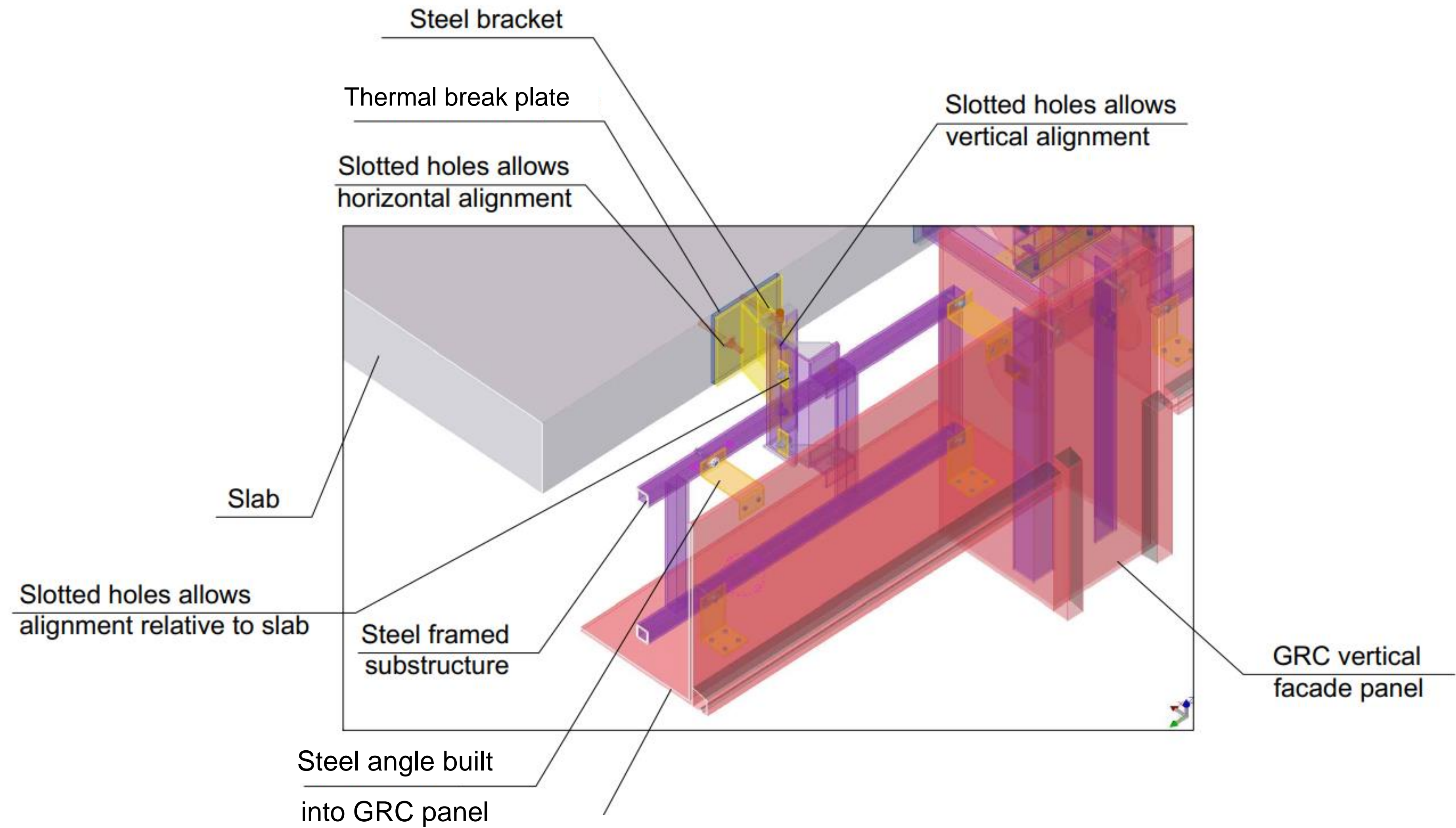


Technical options



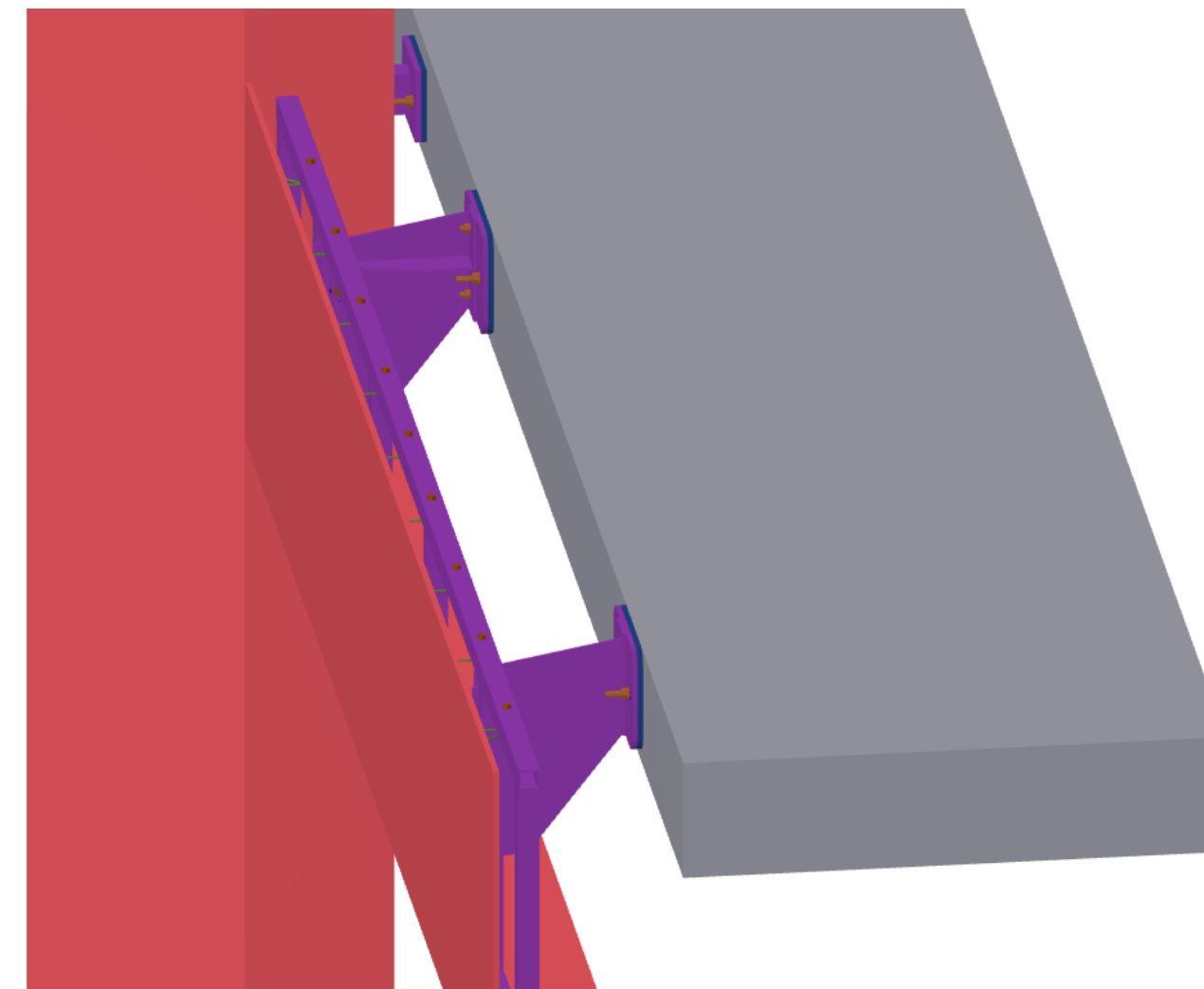
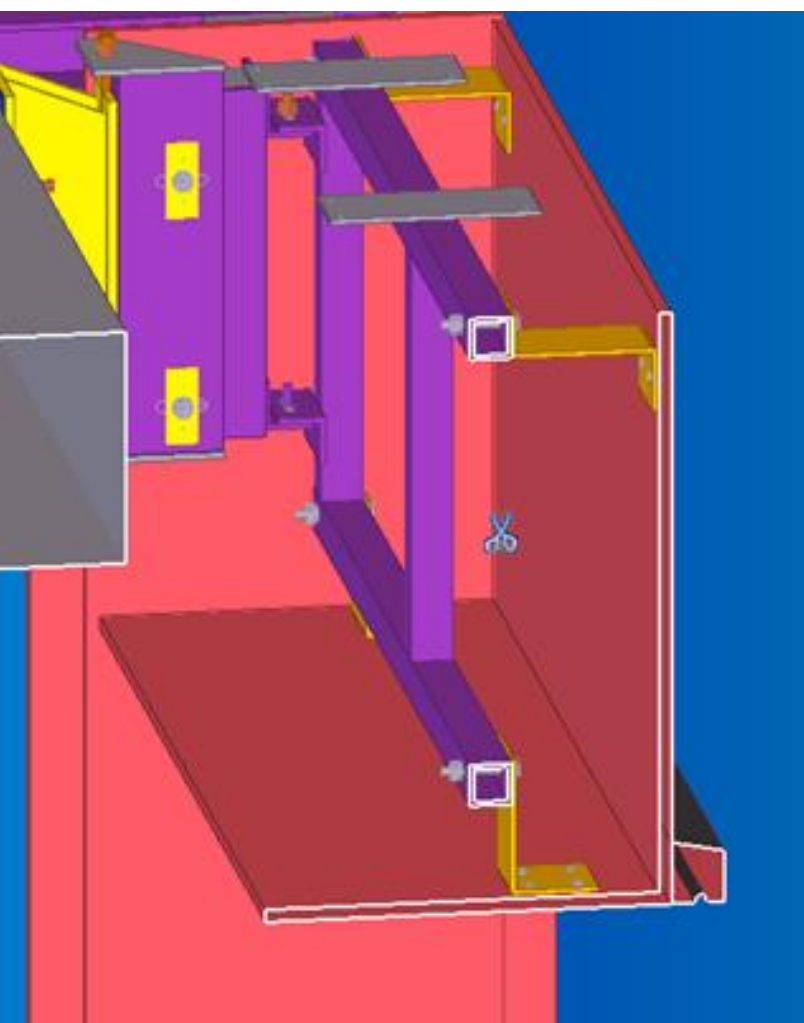
Cast or post-drilled

Fixings Anchor plates



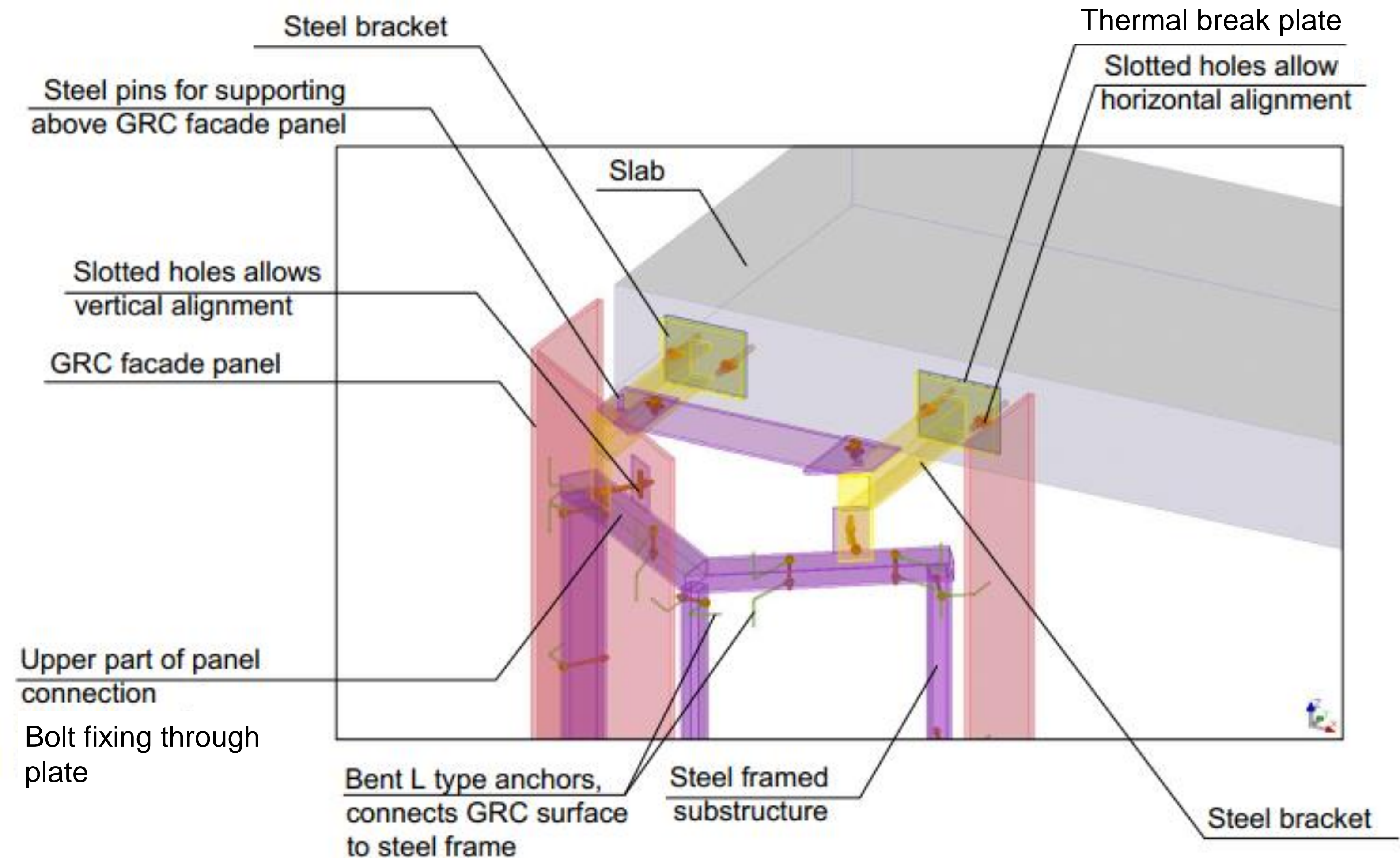
Strong & Reliable

Bonded Fixing – Z & L Anchor plates



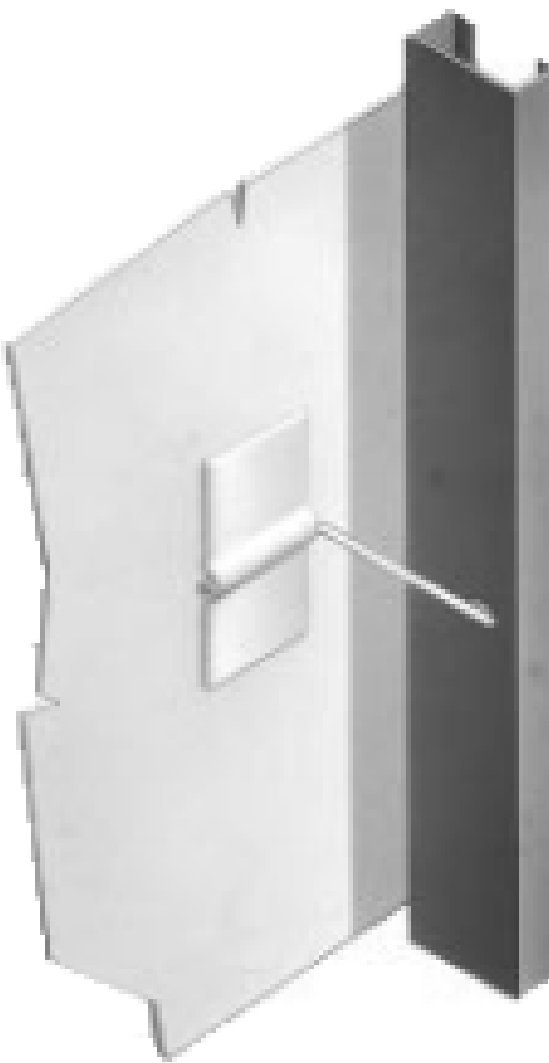
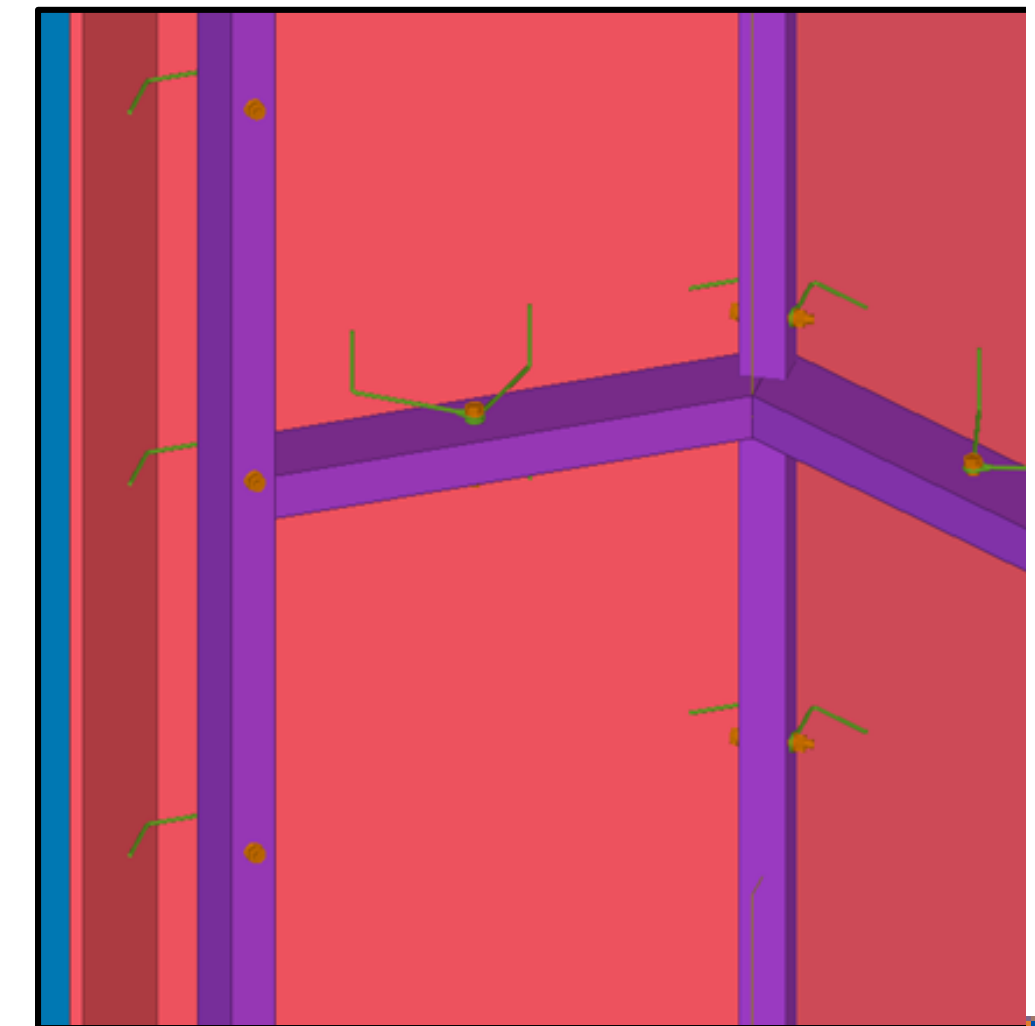
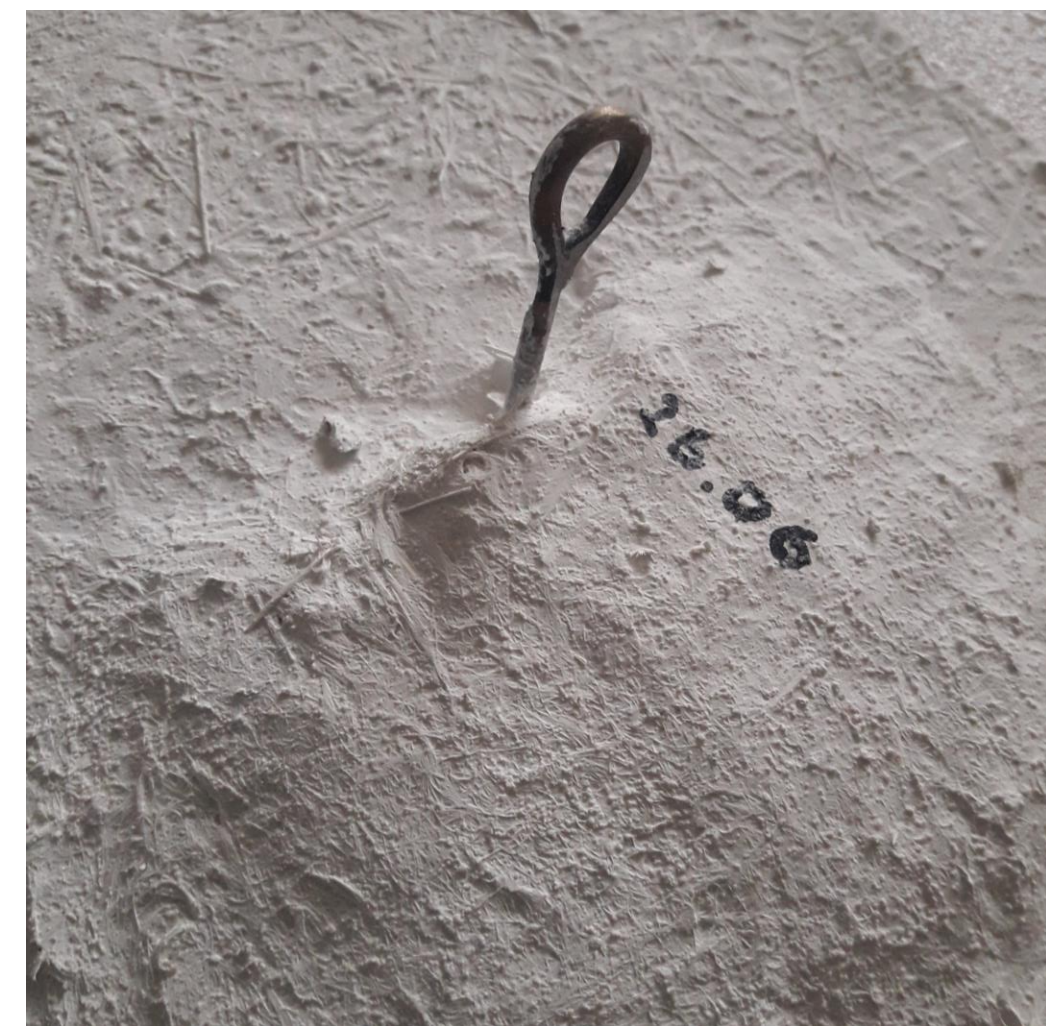
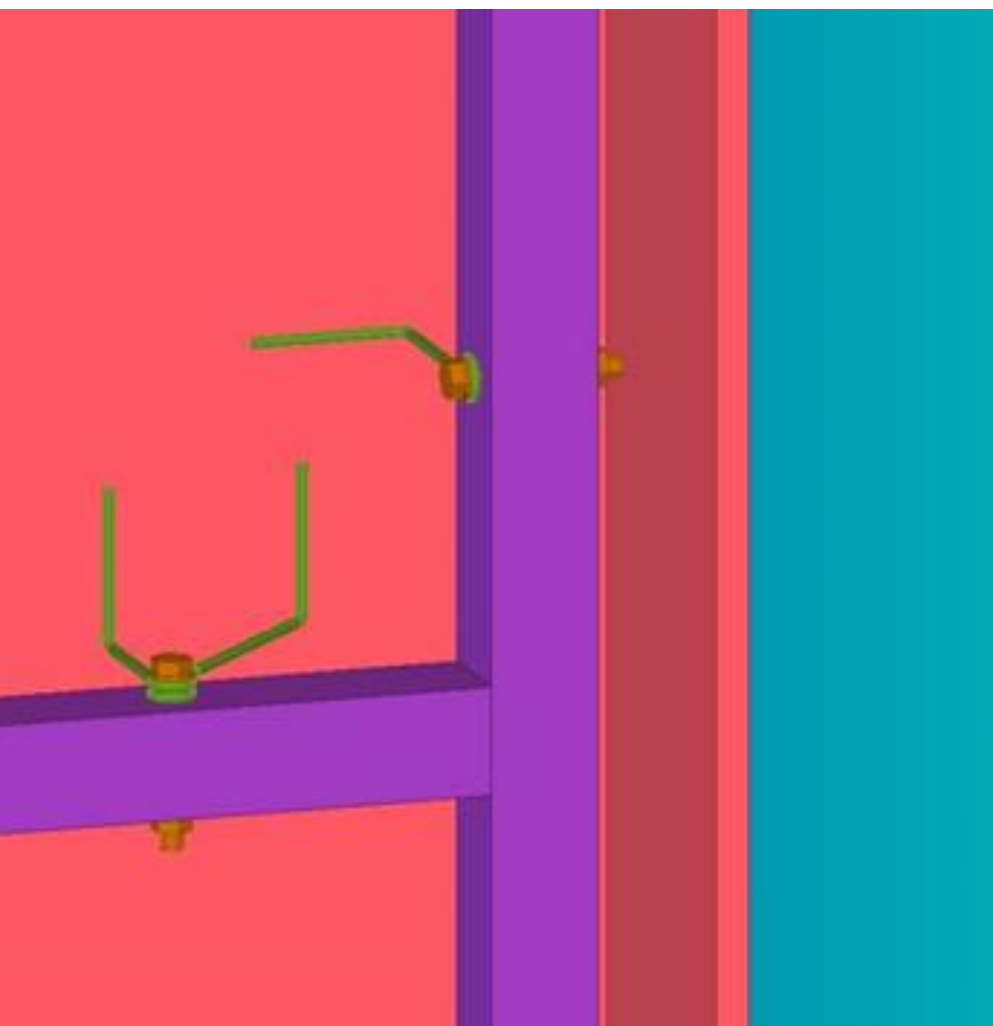
Strong & Reliable

Fixings Subframe and studs



Strong & Reliable

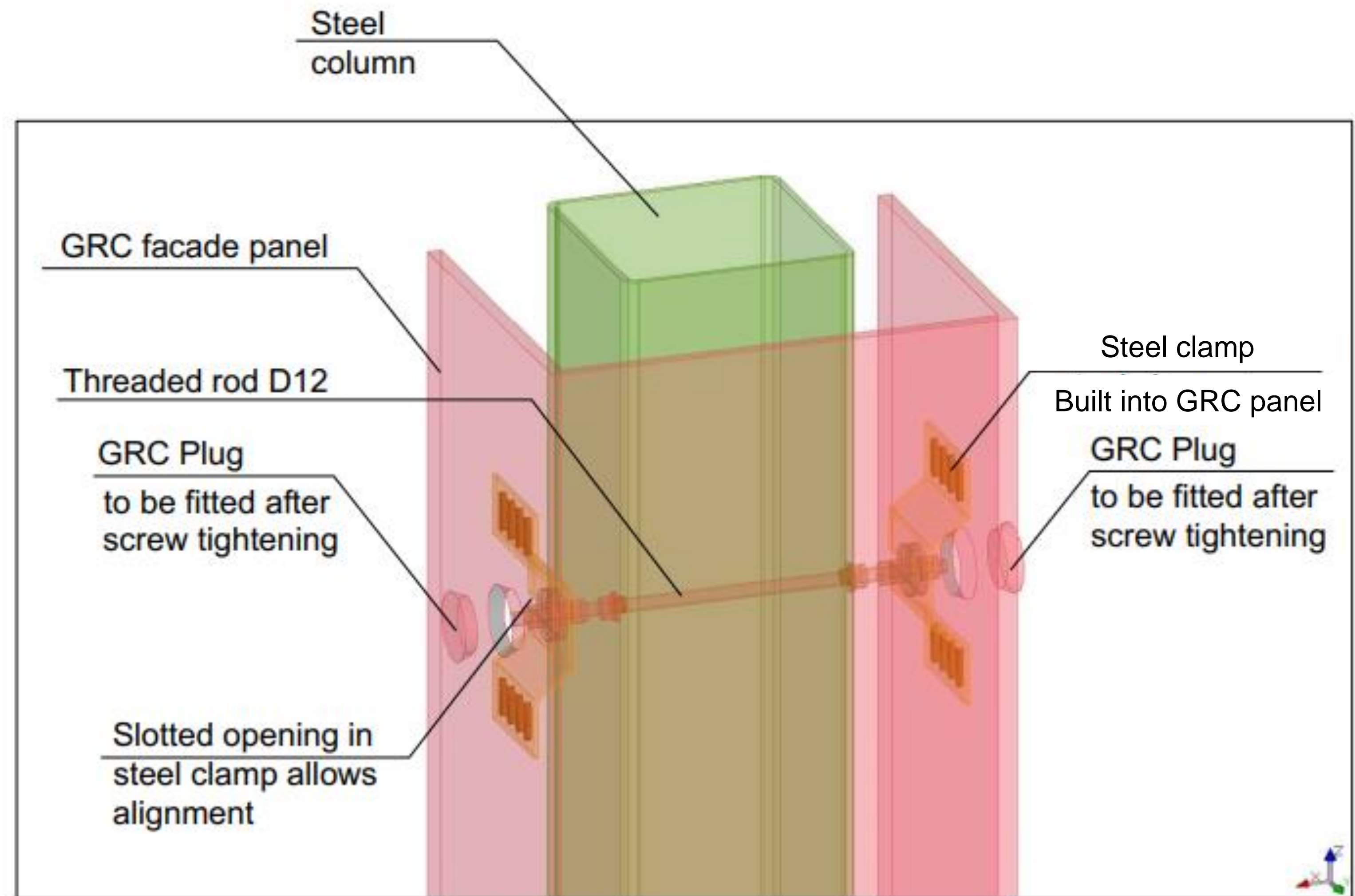
Tubular subframe



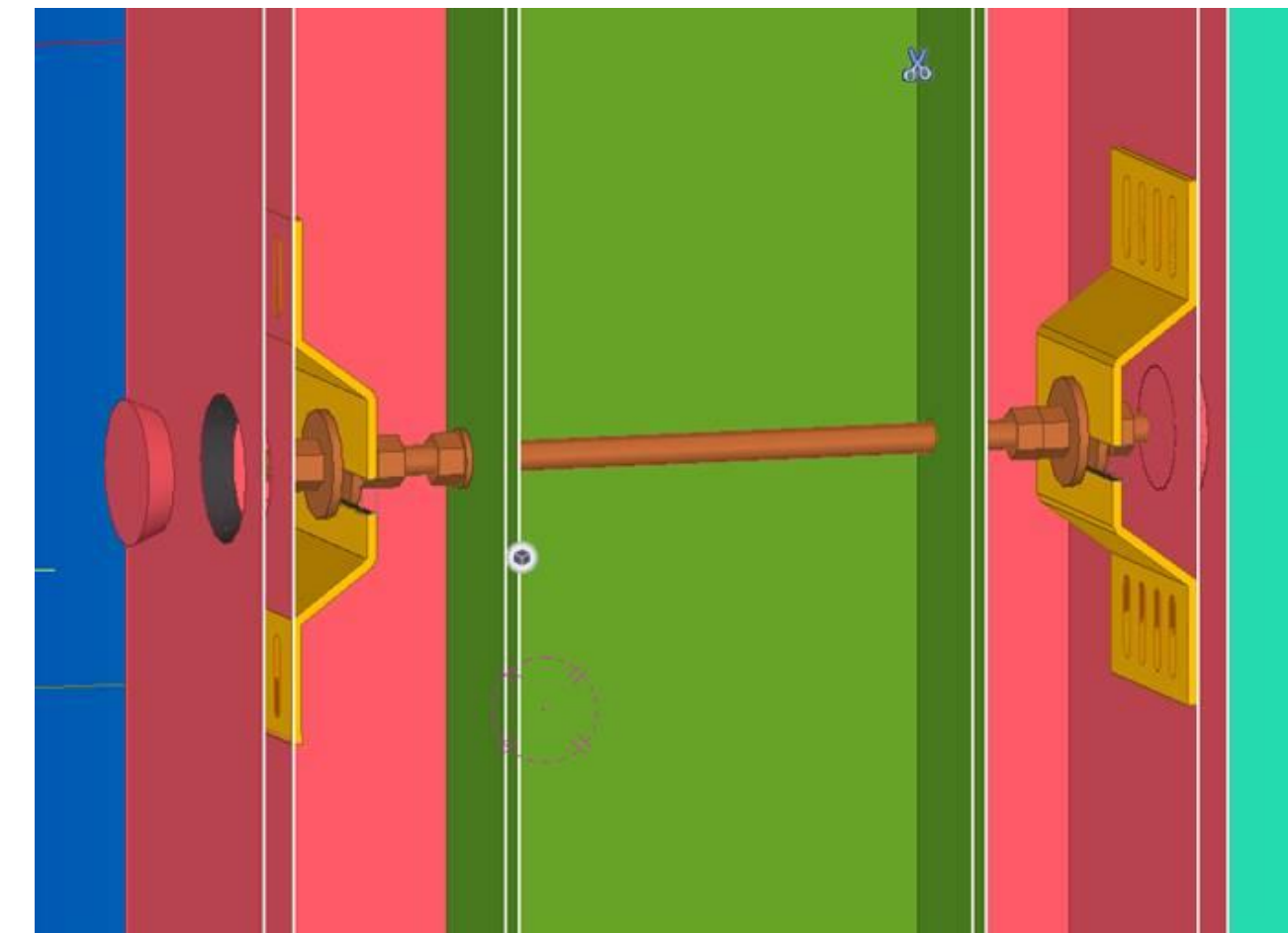
Strong & Reliable

Fixings

Bonded fixing – Bent plate anchor

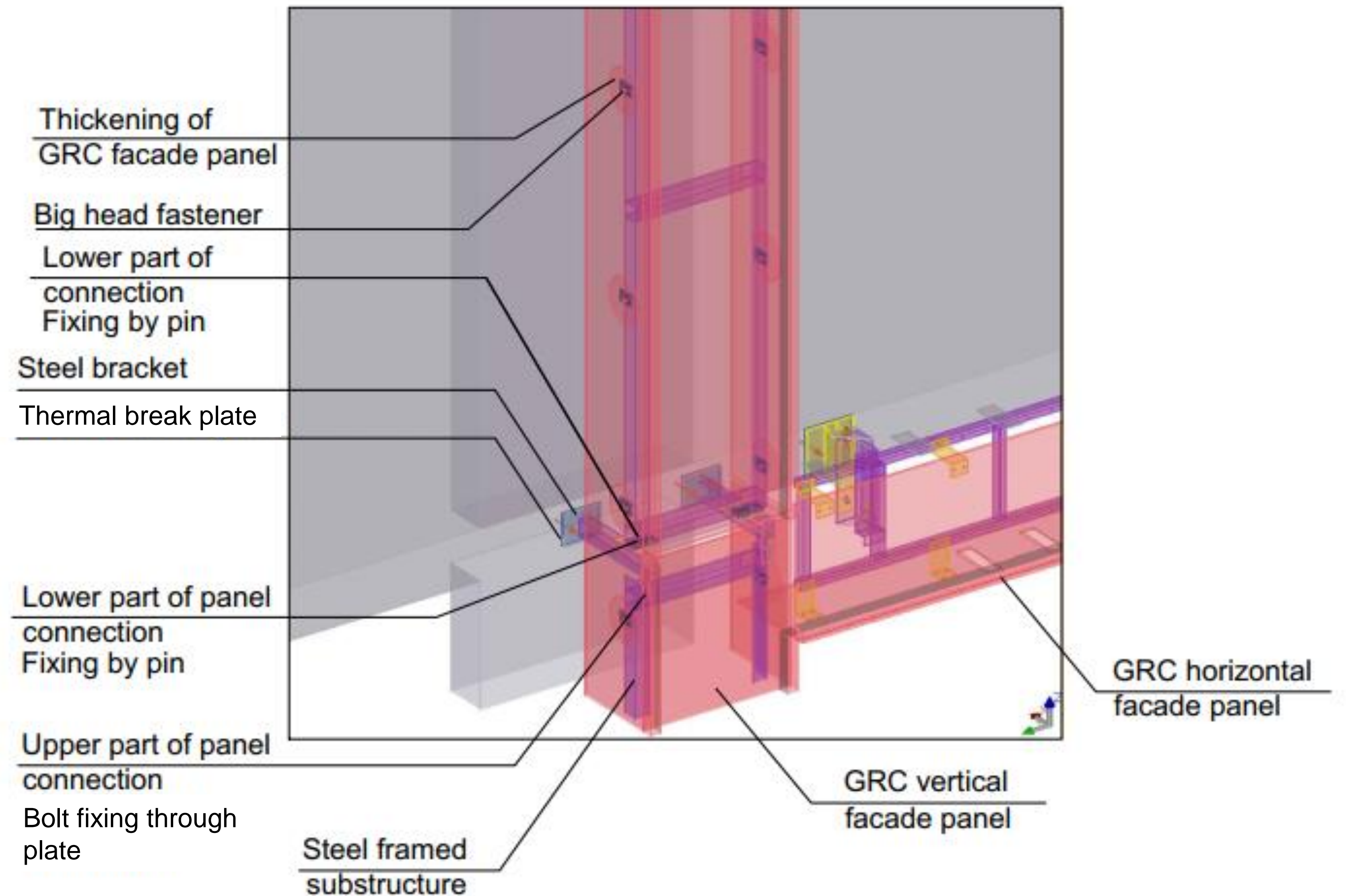


Bonded fixing Bent plate anchor



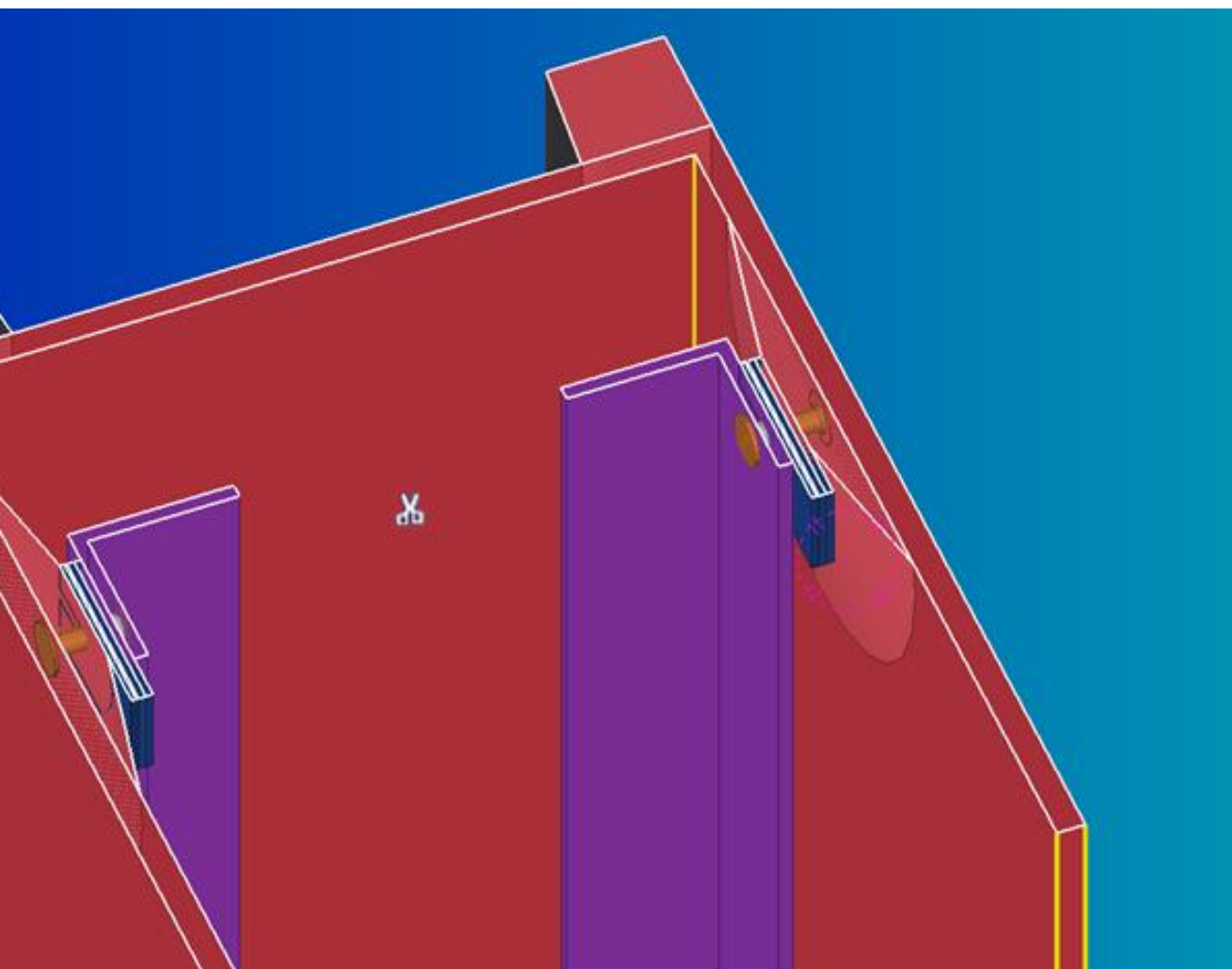
Strong & Reliable

Fixings Bonded fixing – Big-Head anchor



Strong & Reliable

Bonded fixing Bent plate anchor



Pull-out strength 2,5 kN



SKONTO
CONCRETE CLADDING

Design and manufacture of GRC panels and backing systems

- Complex geometries and endless surface finish options
- Reliable partner with experience in construction and manufacturing
- GRCA member with necessary accreditations for UK market



SKONTO
CONCRETE CLADDING

SKONTO CONCRETE CLADDING LTD

Head Office
Melnāiļa street 1a, Riga,
LV-1010. Latvia

London Office
The Hop Exchange
24 Southwark Street, London
SE1 1TY

Call us
U.K. +44 7712 623041
LV. +371 26 637211

Oskars Matisons
CEO, Member of the Board

